

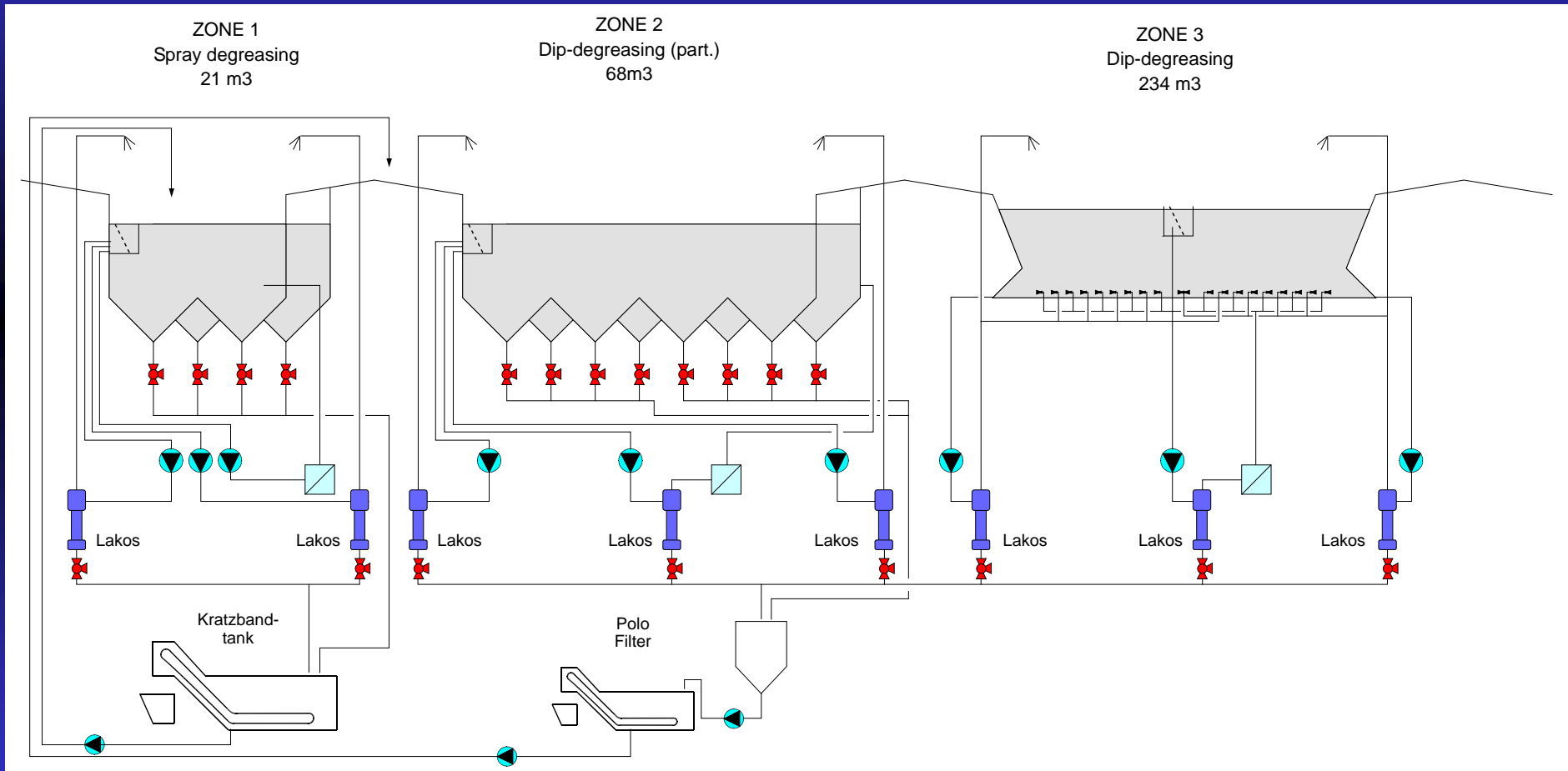
Automotive plant

Germany

Back ground

- ***Old plant with very high production volume***
- ***Change over to demulsifying chemistry***
- ***Suparator® and Q-Filter® were installed and integrated with the existing equipment.***

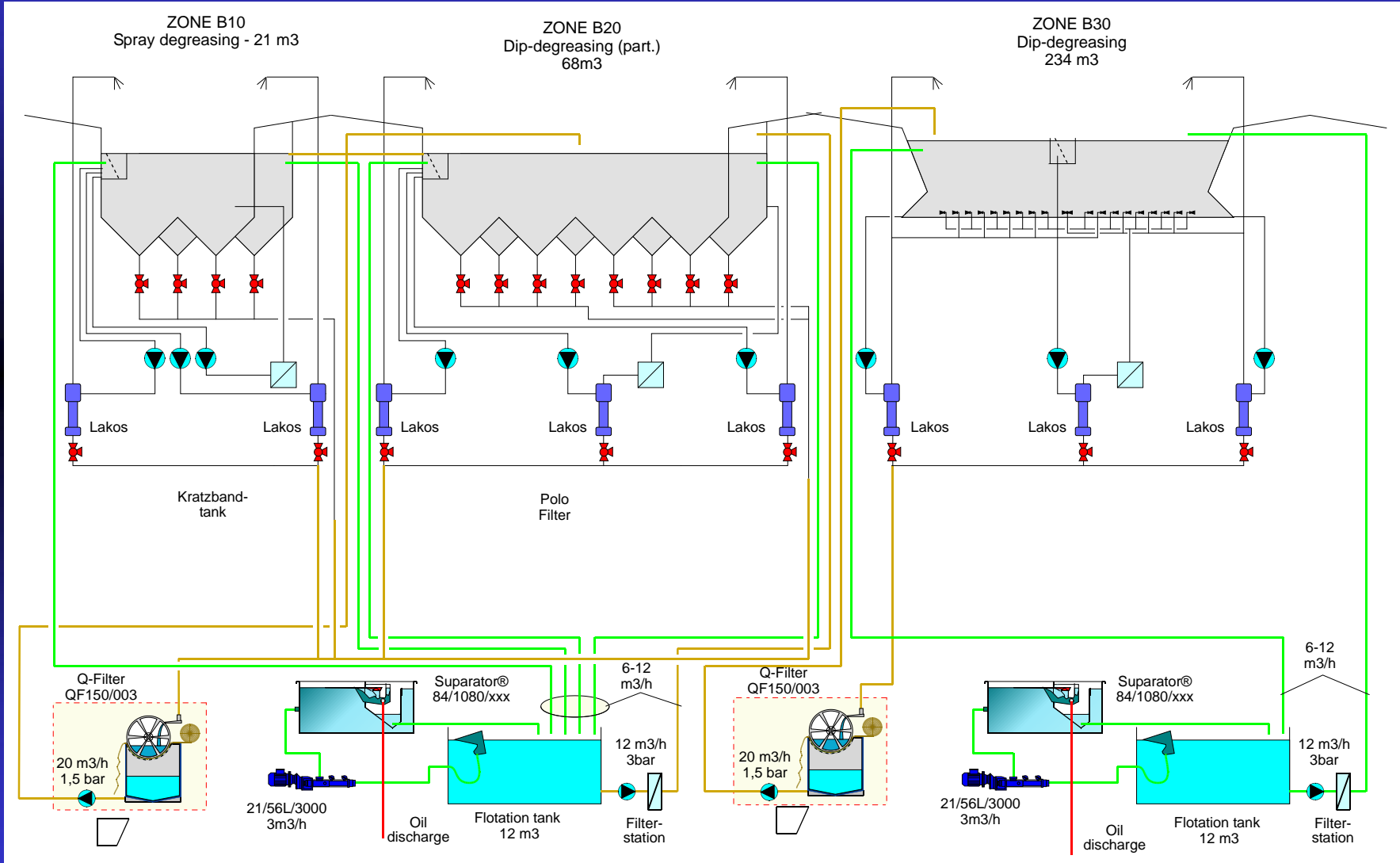
Old situation



Operation (old situation)

- *Hydro-cyclones flushed once every hour for several minutes.*
- *The bottom cones from baths B10 and B20 flushed once every hour for several minutes.*
- *Medium flushed from hydro-cyclones and bath bottom cones is collected in sedimentation tanks with scraper.*
- *Medium is further treated with membrane filtration system.*

New situation



Operation (new situation)

- *The hydro-cyclones are flushed to Q-Filter® once every 10 minutes for 15 to 30 seconds.*
- *The bottom cones from baths B10 and B20 are flushed to Q-Filter® once every 10 minutes for 15 to 30 seconds.*
- *Continuous overflow from baths to settling tank for oil separation.*
- *Oil is removed from settling tanks with Suparator® in bypass.*
- *The effluent from Q-Filter® is send back to the baths directly.*
- *The effluent from settling tanks is sent back to baths via filter stations.*

Both Q-Filters®



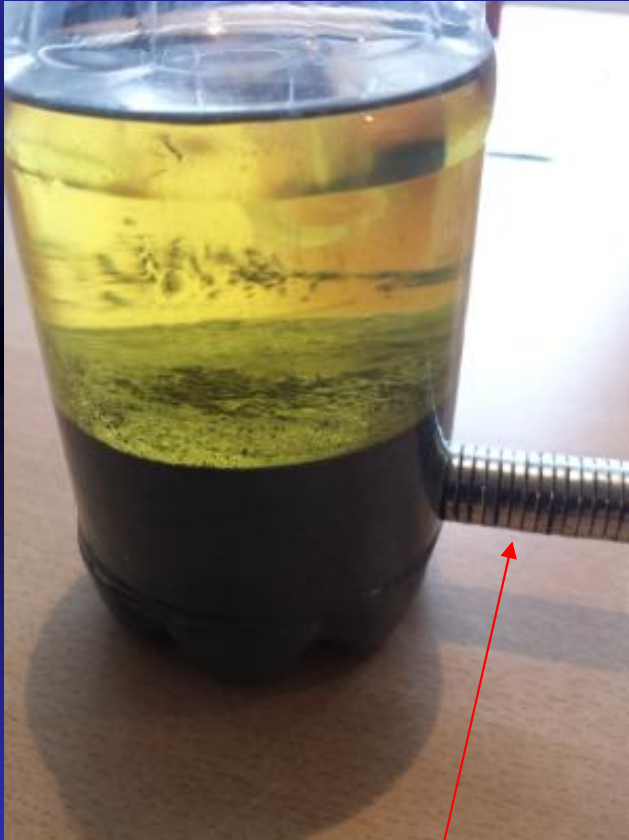
[VIDEO](#)

The dirt being separated.

VIDEO



The dirt that's removed

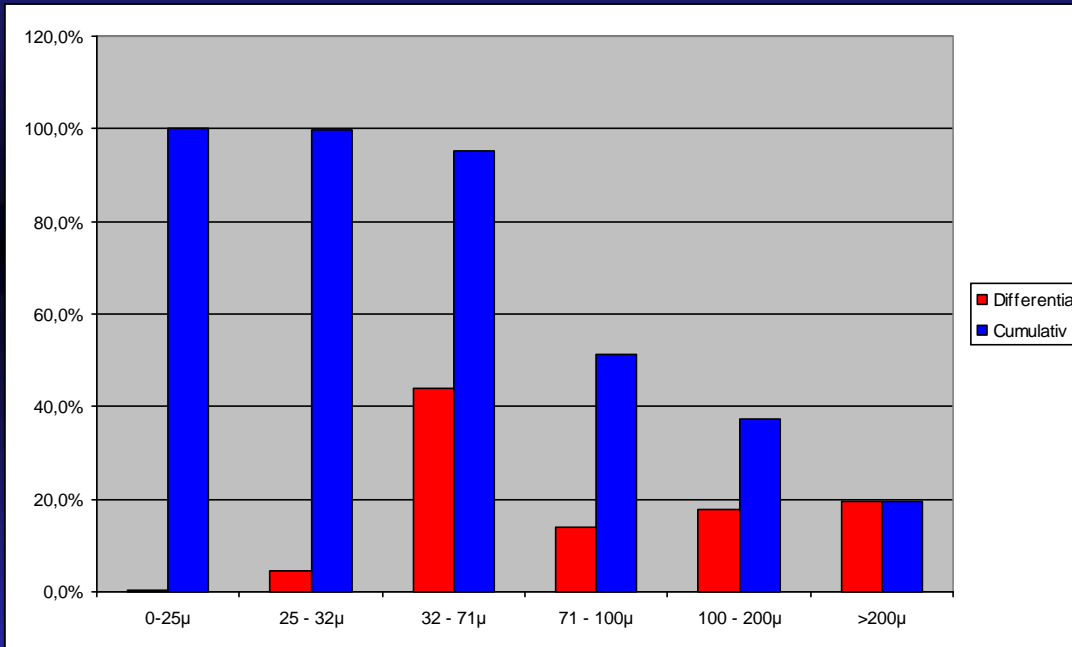


Magnet

The bottle contains dirt, scraped from the filter cloth, after oil was removed via extraction.

On the right is a small magnet, clinging to the bottle. Clearly most of the dirt is metal dust.

Dirt analyses (by weight)



Red indicates the % of each of the fractions. More than 40% is between 32 and 71µ.

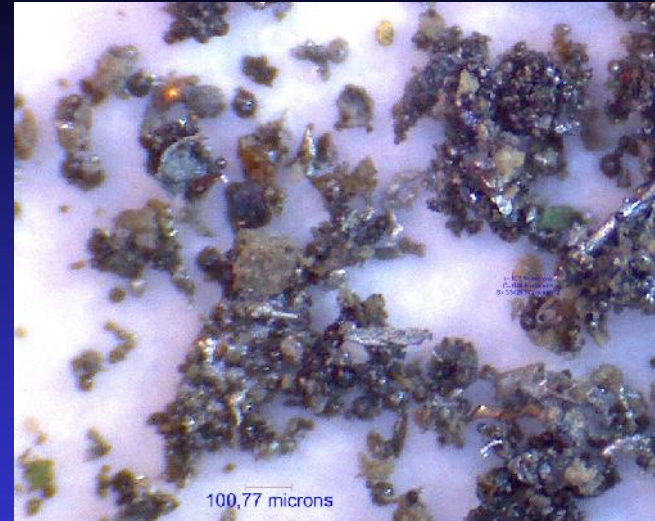
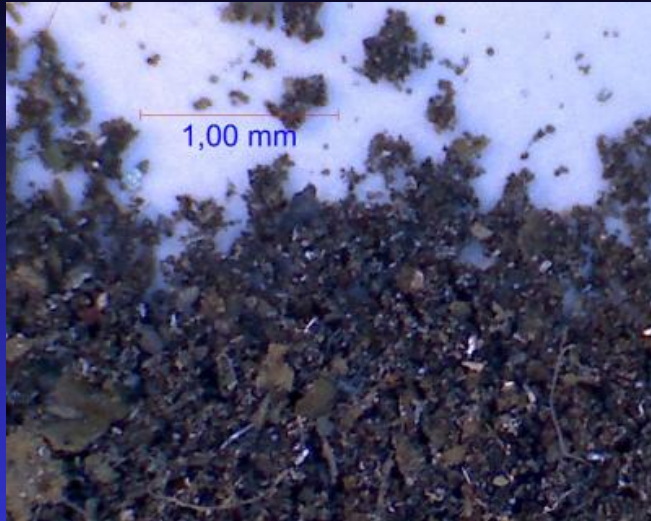
Blue indicates the accumulated % of the fractions, starting at the right.

Removing particles > 32µ removes 95%

The particles

Microscope exposures from the dirt.

The coarser material (>200 μ), clearly visible on the left, is mainly paint flakes and non metallic. The finer particles are metallic.



The Suparskim® skimmer



- *A floating Suparskim® skimmer, installed in the floatation tank.*
- *Continuously removes the surface layer.*

VIDEO

The Suparator® removing the oil

Concentrated oil inside the Suparator® device.



The separated, pure, oil.



The Suparator® units



Dirt after the Suparator® units



- *A magnet, placed at the back of one of the Suparator® devices*



- *The magnet with the collected metal particles after 2 hours.*

[VIDEO](#)

Want to know more?

If you need more information, want to discuss your application or if you are interested in a trial, please contact:

Suparator Systems Europe b.v.

Groenewoud 25A
5151 RM Drunen, The Netherlands

Tel.: +31 (0)73 22000 30

Fax: +31 (0)73 2200039

Email : business@suparator.eu

Web : www.suparator.eu